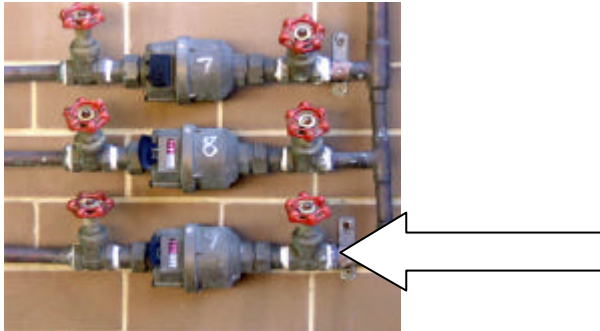


Instructions for 9-219 Bridport Street West



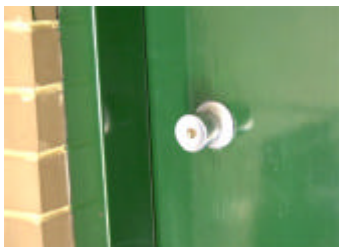
Downstairs, approaching the Security Door, **TURN ON the WATER at the METER.**



Flat #9 is the bottom meter. **TURN ON (Anti-clockwise) BOTH the taps.**



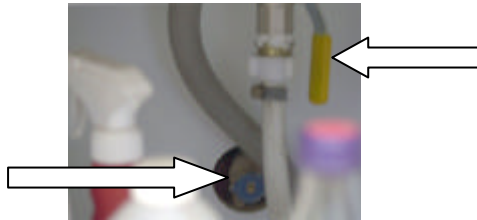
The **Coloured Key** allows access to the **Security Door**. Please ensure it is closed behind you.



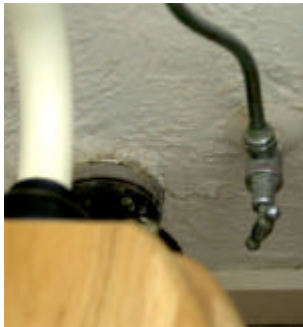
At the top of the stairs, straight ahead is the Laundry Door. The Key for this is on the Kitchen Wall Pinboard. Ensure it is locked before you leave.



To the right is the Front Door. **The Silver Key works on BOTH locks.** The TOP LOCK is a dead lock. Ensure it is set correctly when you leave.



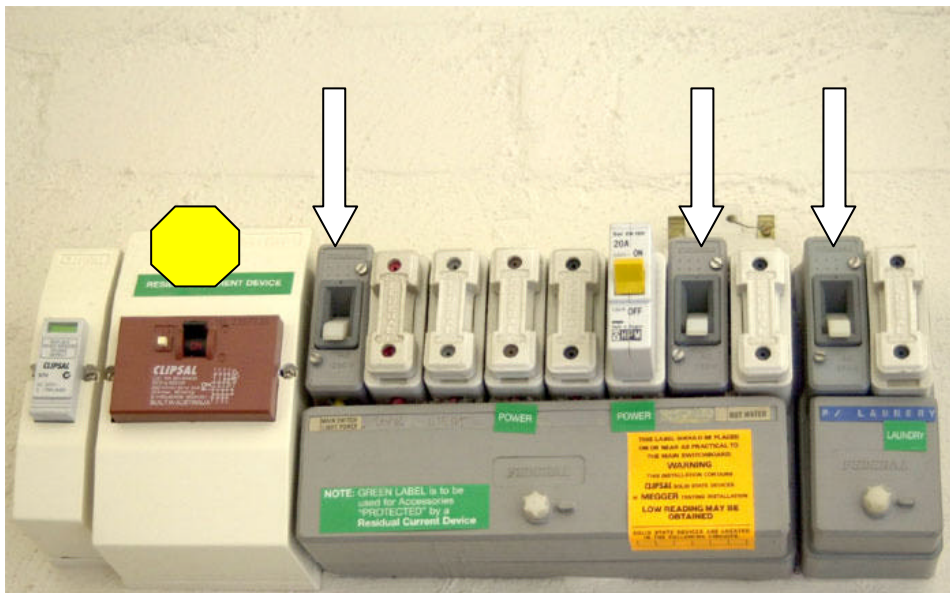
You'll need to **Get Under The Sink** and **TURN ON the water.** TURN ON so that the yellow handle on the right must be in line with the hose like in this photo. The Multigrips must be used to turn the broken blue tap ON (Anticlockwise).



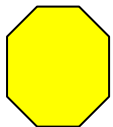
The Toilet Tap will have to be **TURNED-ON** to fill the Cistern (Anti clockwise). It must be turned-off when you leave.



In the Laundry, if you want to use the washing machine, you'll need to **TURN ON** the tap to use the water. This **MUST** be turned-off after using the washing machine.



For Electricity the switchboard is on the eastern wall in the BEDROOM. The Three GREY-backed switches MUST be turned-ON. These MUST be turned-off after your stay.



This is a safety switch. If you try to electrocute yourself, this will trip. Whatever you were doing (jamming something in the toaster etc) pull that device out of the wall and reset this switch. Then you can have electricity again. Plug the appliance back in and try using it again. If it trips again, the appliance must be replaced.

The hot water takes about twenty minutes to get to temperature.

No Power is available in the laundry until the far-right switch is ON.

CHECKLIST FOR WHEN YOU'RE LEAVING.

1. Rubbish MUST be removed.
2. The Fridge MUST be emptied completely and the doors left open.
3. Turn off the Water under the sink, Yellow Handle AND Multi-grips on the old broken tap.
4. Turn off the water to the Toilet Cistern.
5. Turn off the Water in the Laundry. Make sure the TAP is off HARD.
6. Lock the Laundry Door and put the key back on the pinboard.
7. Put these instructions on the kitchen bench for the next tenant to read.
8. Before walking out the door, TURN OFF ALL THE POWER SWITCHES at the switchboard in the bedroom.
9. Set the DEADLOCK CORRECTLY and slam the door on your way out.
10. Downstairs, CHECK first which water meter you're touching, (the bottom one) and TURN OFF both TAPs to prevent water filling-up the flat...
11. Take the keys back to number 215 Bridport Street West and leave them with Ghini, Bev or Richard 9690 8452.
12. Ring Robbie Thomas and let her know you have vacated the flat. **0402 115 881 or 9537 1090**

TELEPHONES. There is a second line in the flat, which you can get connected to a phone. You can only use the plug with the TICK on it. The one with the CROSS is being used by my business. Email me to discuss connection. You need to bring your own handset. ***james@jamesnixon.com***